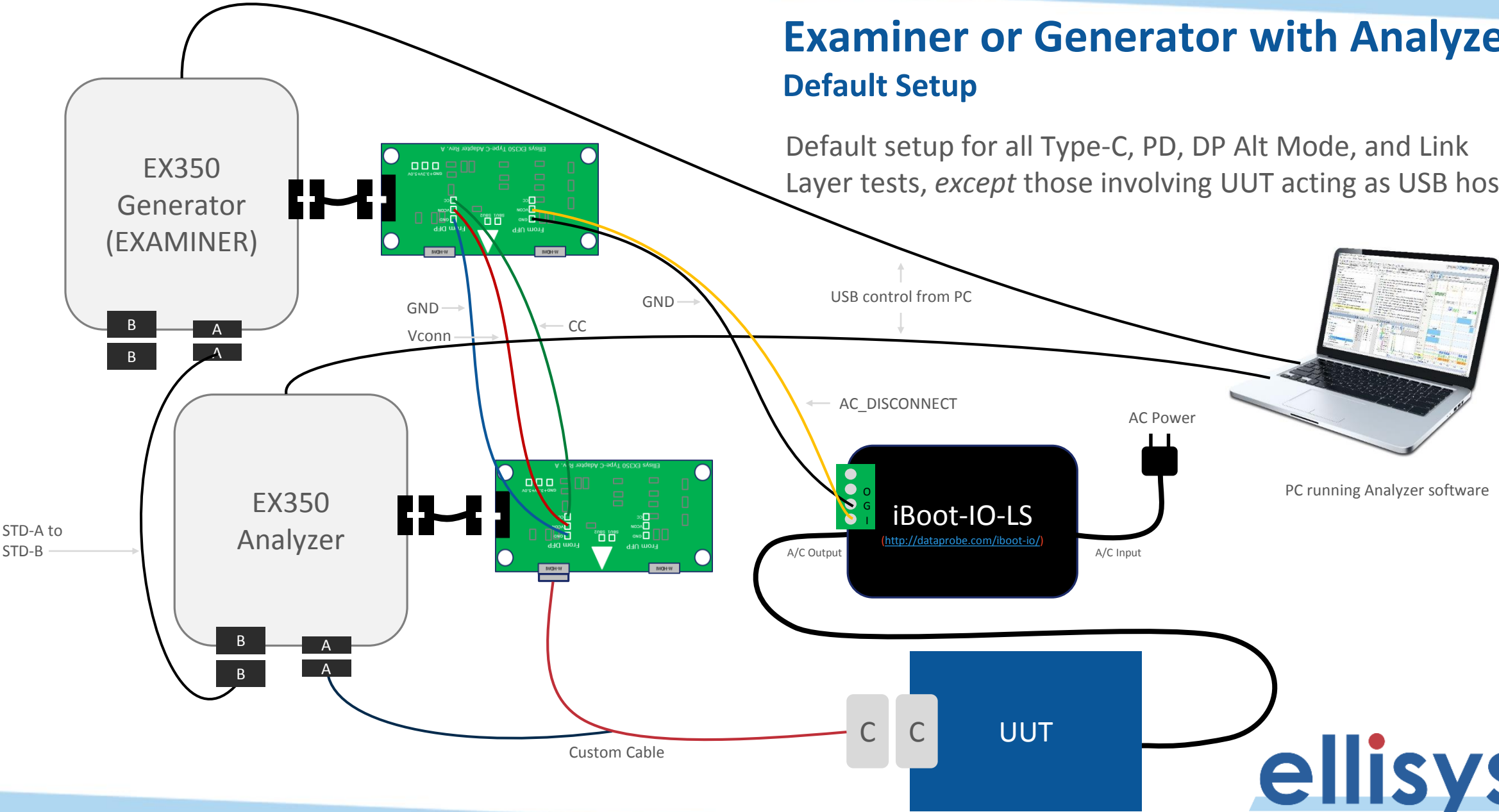


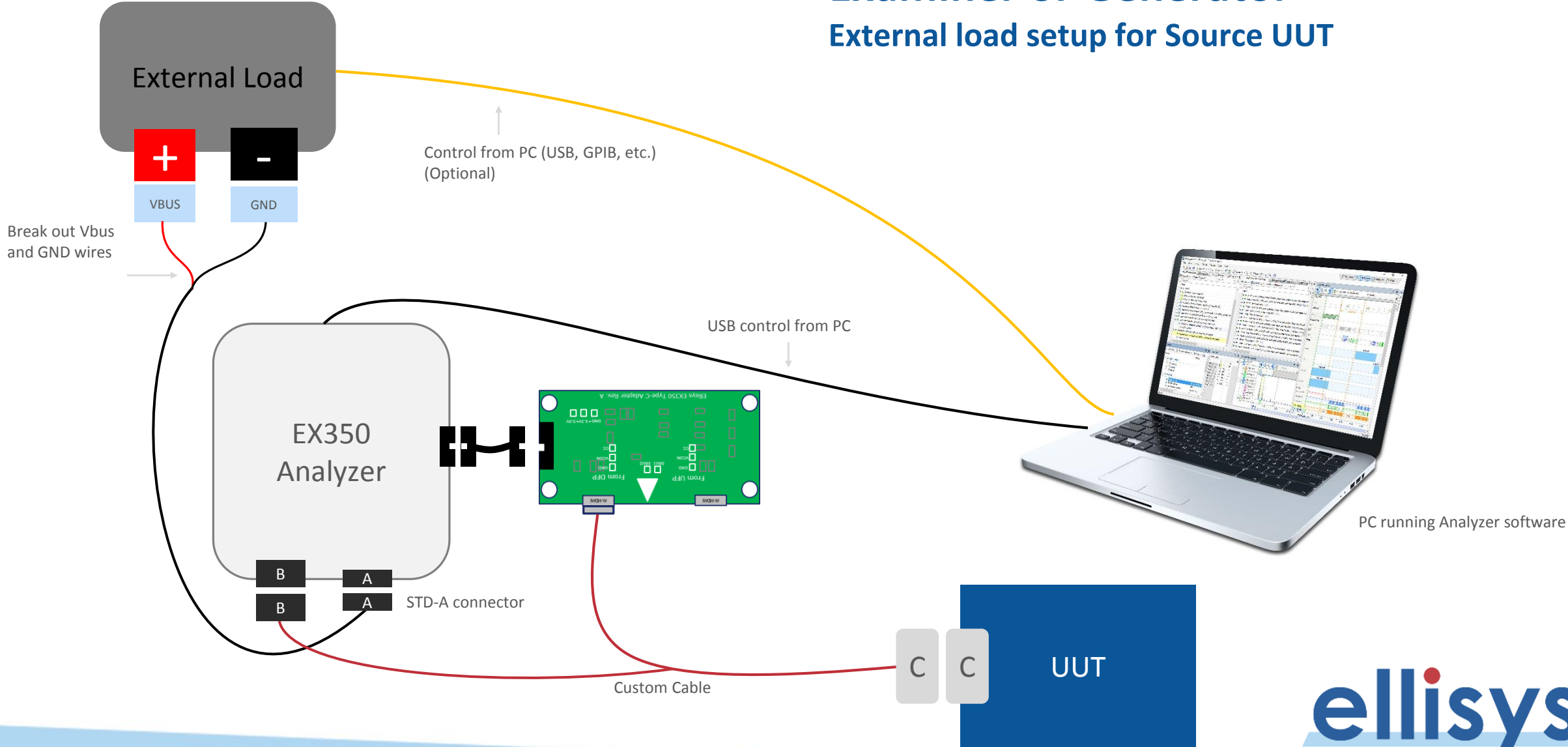
Examiner or Generator with Analyzer Default Setup

Default setup for all Type-C, PD, DP Alt Mode, and Link Layer tests, *except* those involving UUT acting as USB host

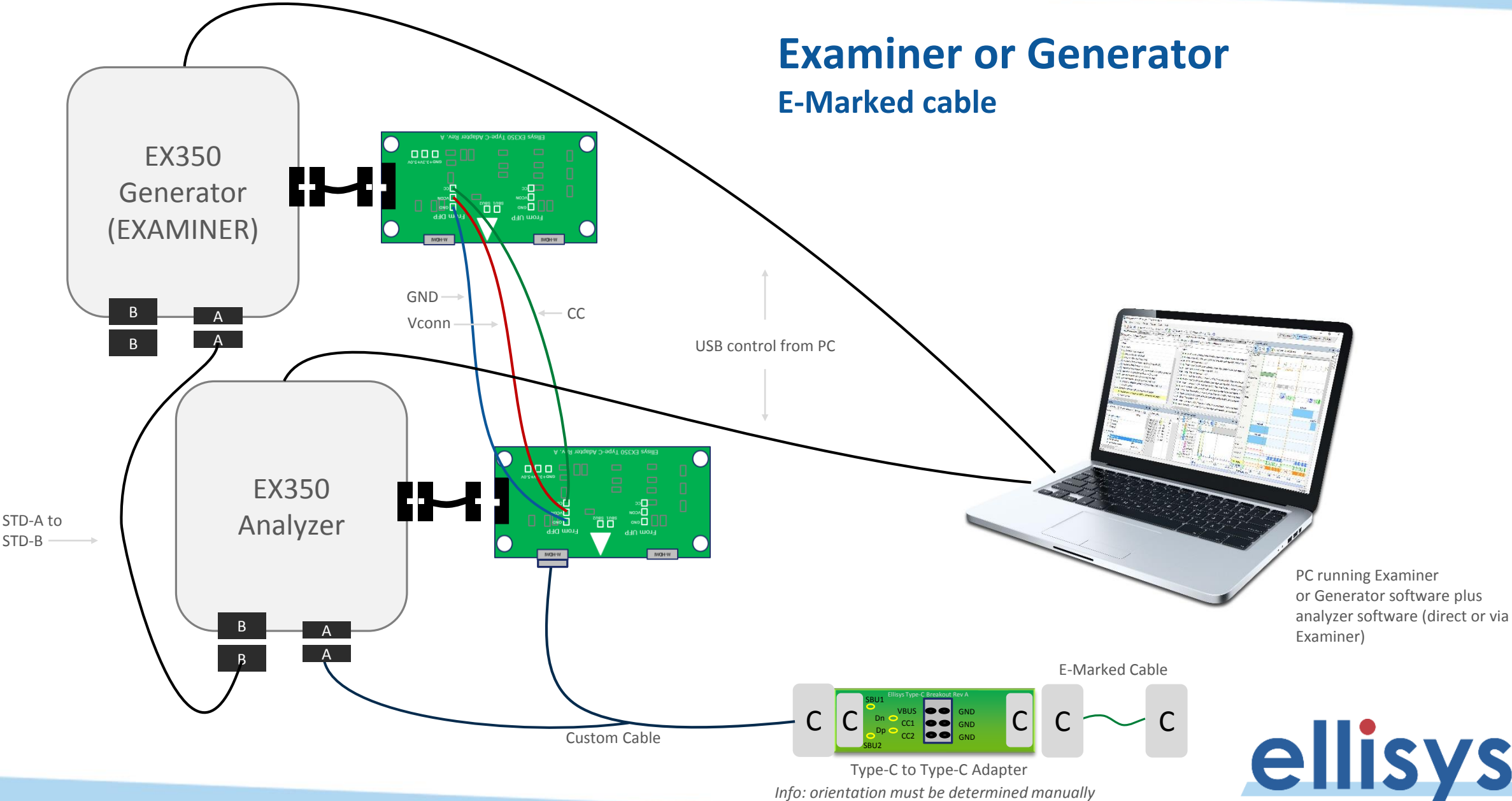


Examiner or Generator

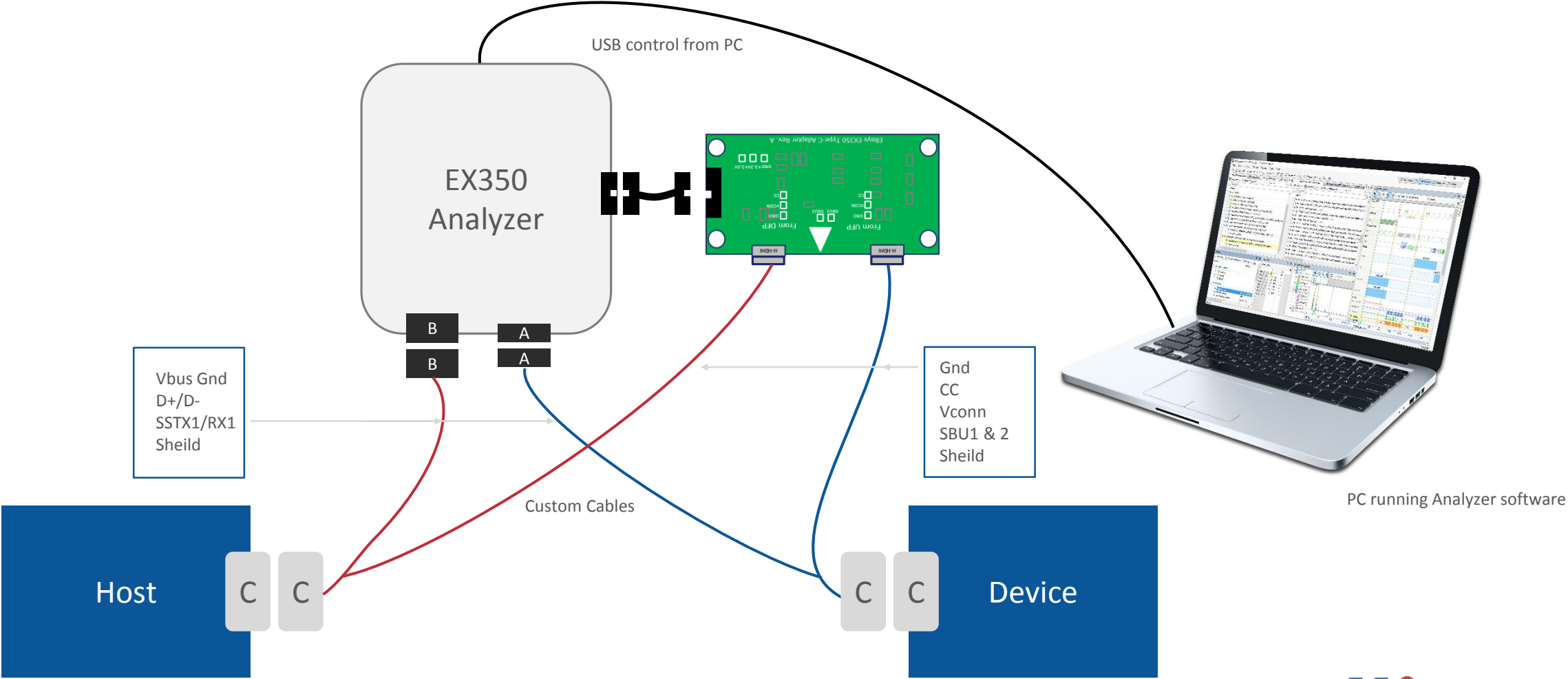
External load setup for Source UUT



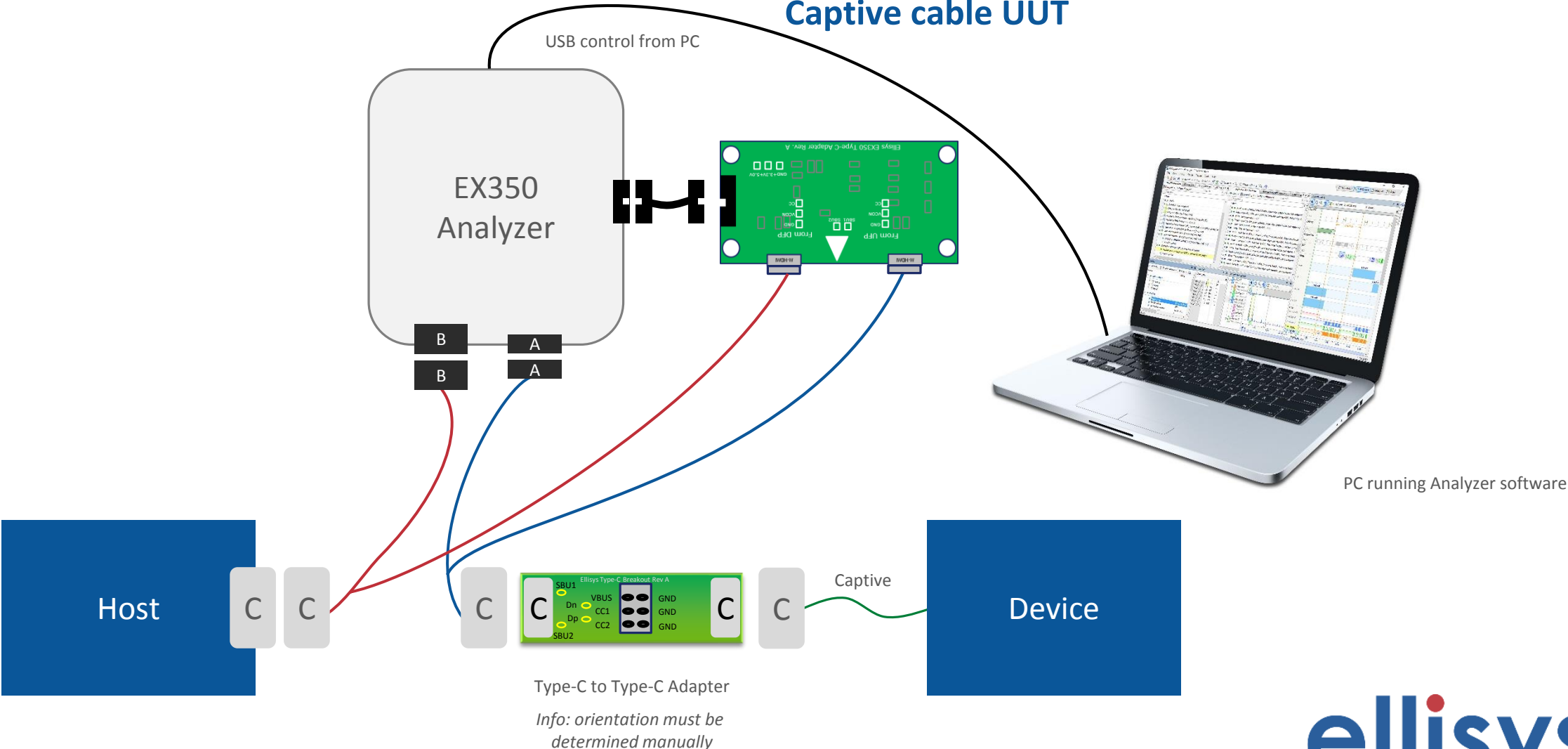
Examiner or Generator E-Marked cable



Analyzer Setup

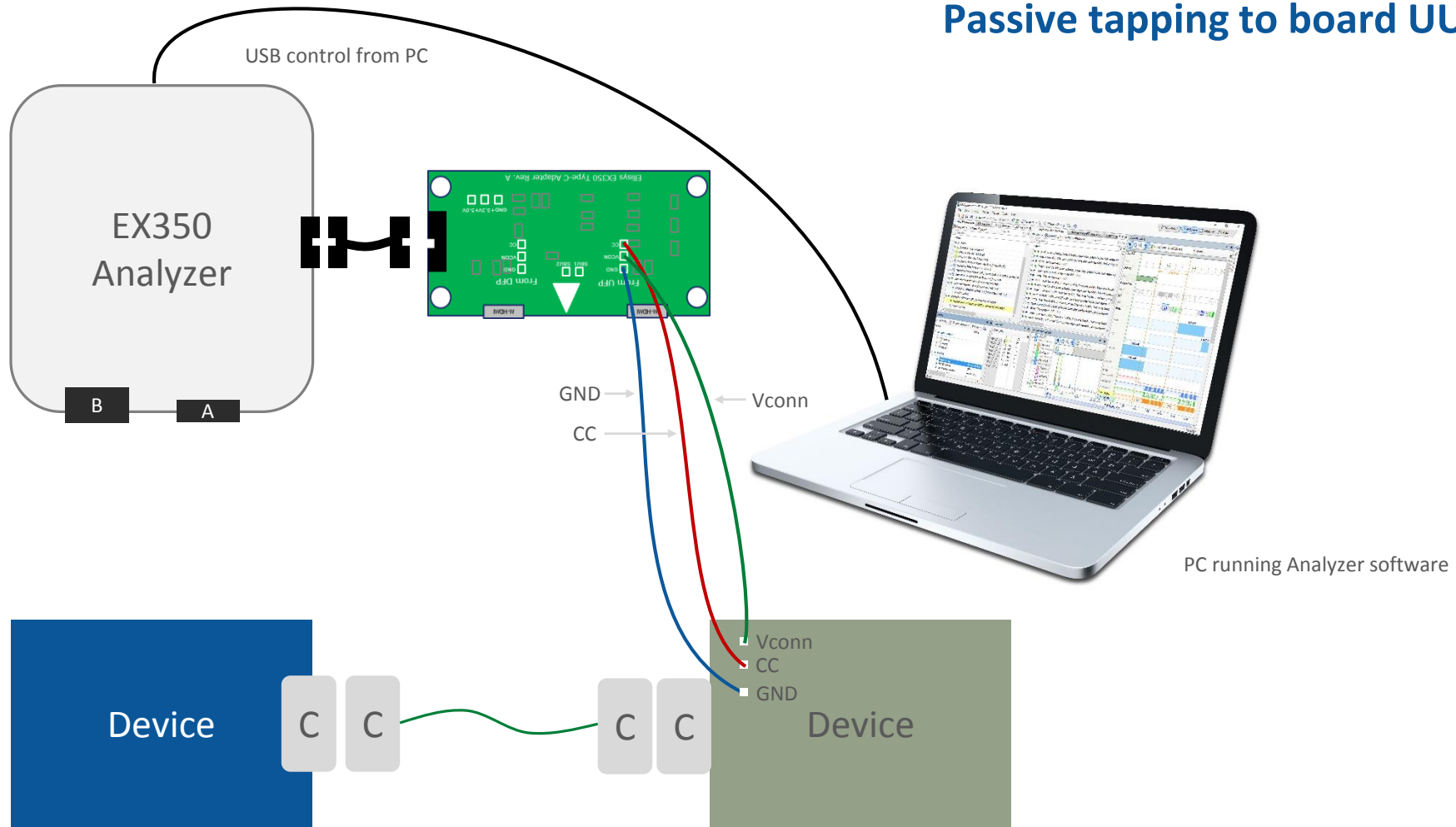


Analyzer Captive cable UUT



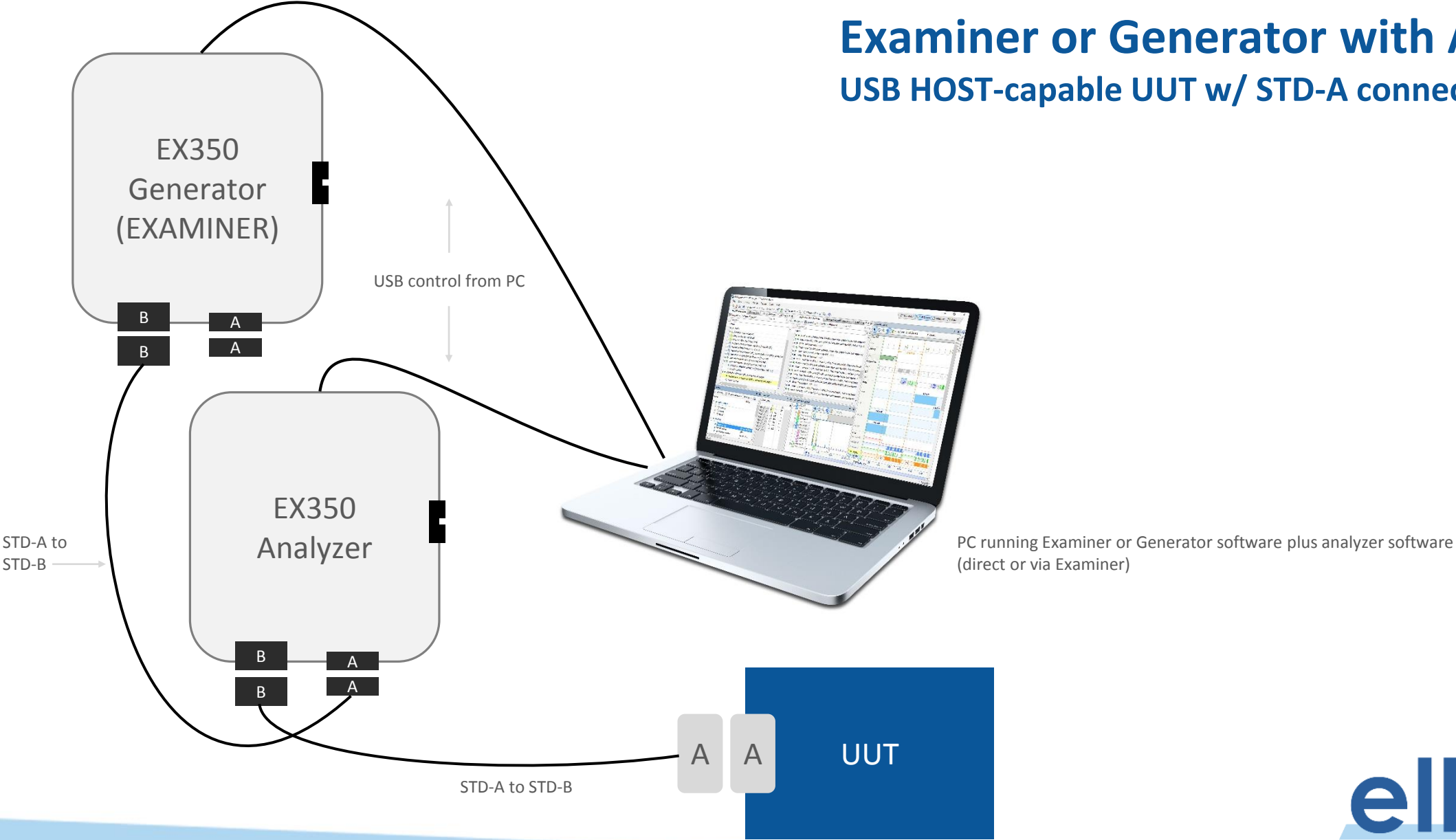
Analyzer

Passive tapping to board UUT



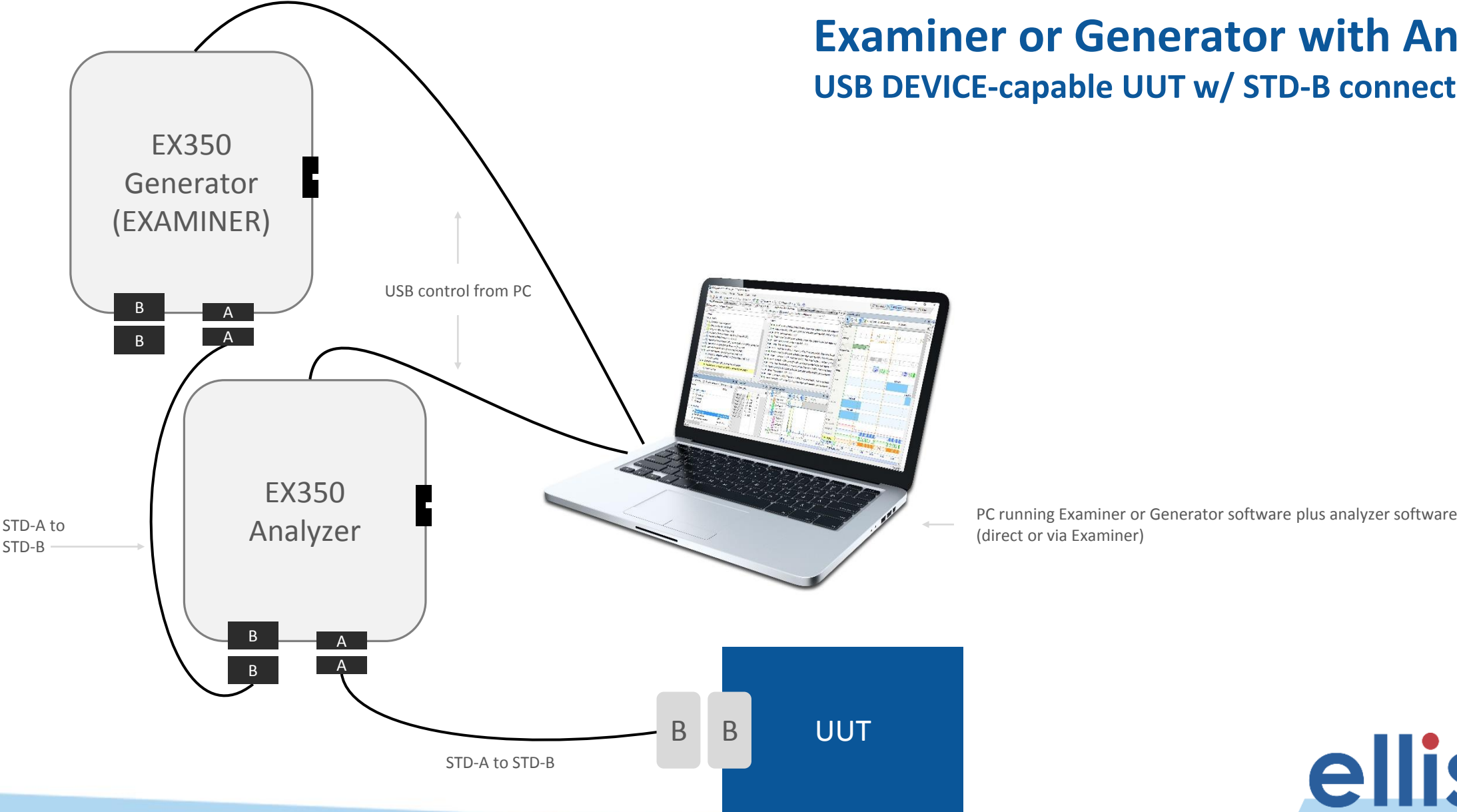
Examiner or Generator with Analyzer

USB HOST-capable UUT w/ STD-A connector

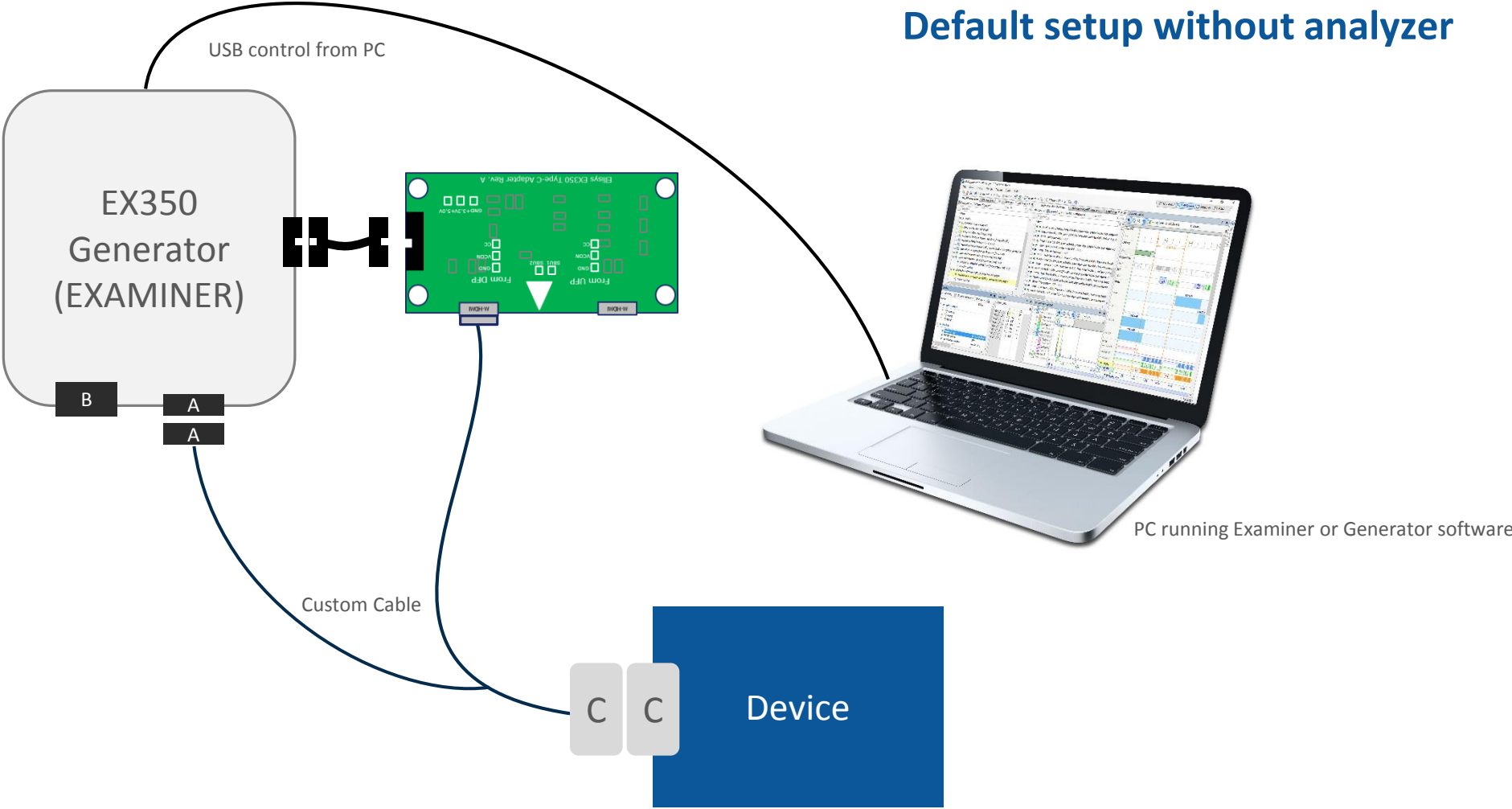


Examiner or Generator with Analyzer

USB DEVICE-capable UUT w/ STD-B connector

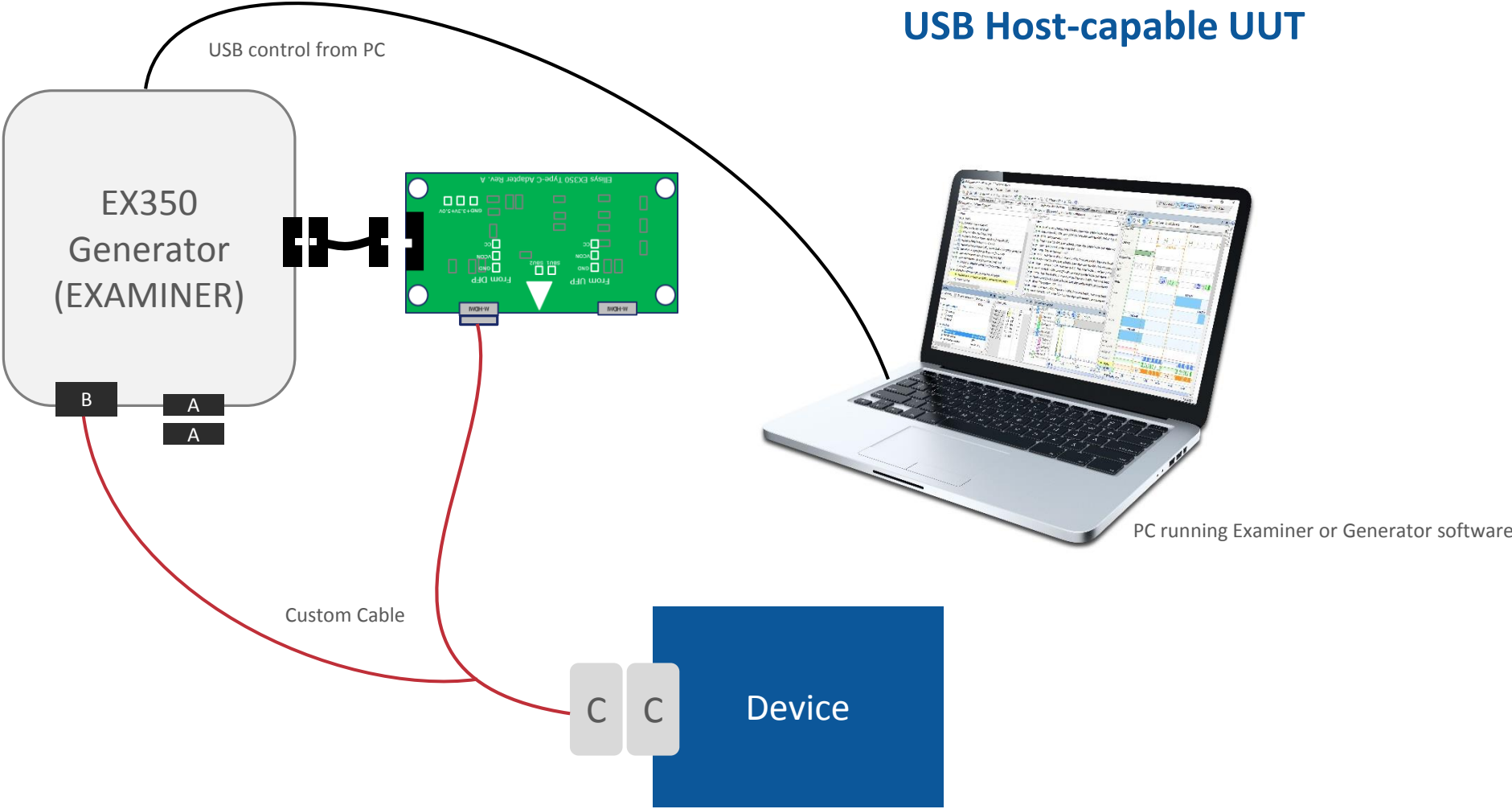


Examiner or Generator Default setup without analyzer



PC running Examiner or Generator software

Examiner or Generator USB Host-capable UUT



Analyzer

DP Alt Mode without blocking signal

